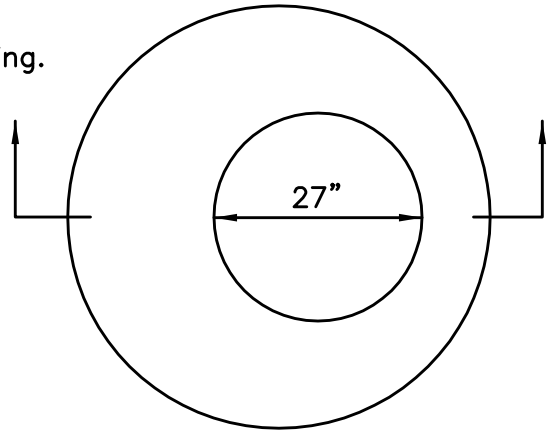
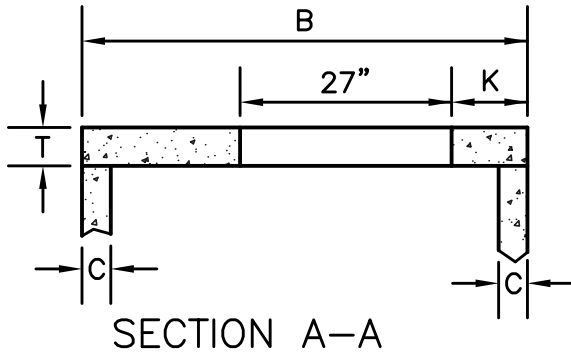


NOTE:  
 HS20 Roadway Loading Catch Basin Cover Slab of  
 Precast Reinforced Concrete with Rectangular Opening.



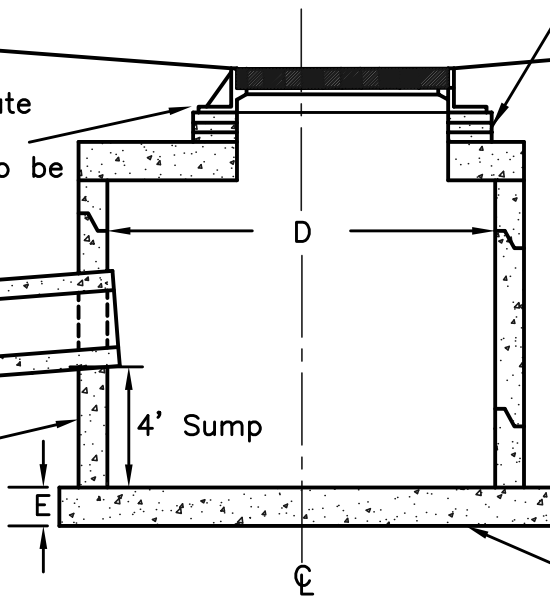
- Note:
1. Steps needed for structure height greater than 4'.
  2. Cover Slab to Rest on Bed of Mortar on Full Thickness of Structure Walls, not to Rest on Pipe Tongue or Groove.
  3. Location of Structure as Shown in Plans.

PLAN OF COVER SLAB

Adjusting Rings, 2 Min., 3 Max., Full 3/8" Bed of Mortar Between Rings. Plaster Exterior Only with 2" Min. Thick Coat. Strike Off Interior. No shims permitted. Stagger on the Adjustment Rings Not to Exceed 3/4" Total.

Frame and Grate  
 See plan for  
 specific type to be  
 used.

Precast Reinf.  
 Concrete  
 Barrel  
 Structure.



STRUCTURE REQUIREMENTS					
D	B	C	E	T	K
48"	58"	8"	8"	6"	6"
54"	65"	8"	8"	8"	6"
60"	72"	8"	8"	8"	7"
66"	79"	8"	8"	8"	7"
72"	86"	8"	8"	8"	8"
78"	93"	8"	8"	8"	8"
84"	100"	8"	8"	8"	9"

Precast Reinforced Conc. Base.

SECTIONAL VIEW

MnDOT Spec. ref. 2506, Detail  
 ref. 4011, 4020

ROUND MANHOLE HL-465C2

NOT TO SCALE