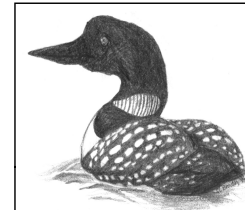


PRESIDENTS

CITIES

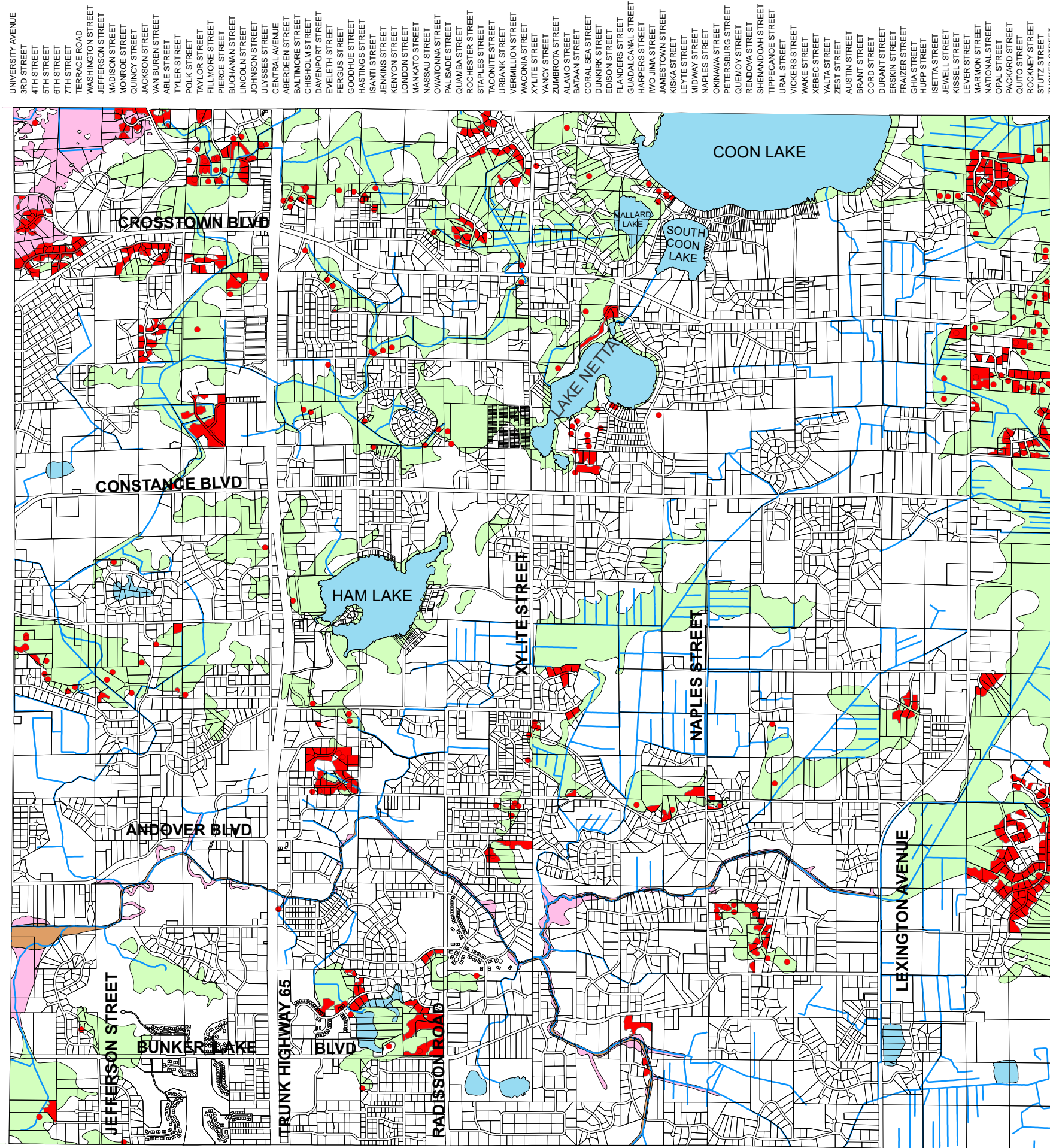
BATTLES

AUTOMOBILES



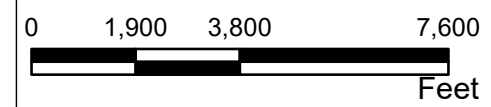
# HAM LAKE, MINNESOTA

## FLOOD ZONE MAP



### Legend

- FEMA LOMA Structure Removed
- FEMA LOMA Area Removed
- Ditches
- Zone A
- Zone A (Elevation)
- Zone A FLOODWAY



Map Date: 4/16/2025

**ABBREVIATIONS:**  
 FEMA - Federal Emergency Management Agency  
 LOMA - Letter of Map Amendment  
 Zone A - 1% probability of flood in any given year.  
 (100 Year Flood)

**FLOOD ZONE MAP:**  
 Features portrayed on this map are a graphical representation, and should be viewed in this context.

**Sources:**  
 Anoka County Engineering & Surveying Departments  
 Federal Emergency Management Agency (National Flood Insurance Program)

