

MINNESOTA DEPARTMENT OF TRANSPORTATION MONUMENTATION PLAT NO. 02-M23

STATE PROJECT NO. 0208 (65-5-34)
IN SECTION 17, T.32 N., R.23 W., ANOKA COUNTY, MINNESOTA

MONUMENTATION PLAT STATEMENT

Pursuant to Minnesota Statutes 160.14 this plat delineates the boundary of existing Trunk Highway No. 65. There may be discrepancies between this plat and record descriptions.

THE COMMISSIONER OF TRANSPORTATION IS HEREBY DESIGNATING THE DEFINITE LOCATION OF TRUNK HIGHWAY NO. 65 FROM THE SOUTH SIDE OF MOORE LAKE TO THE NORTH COUNTY LINE

This is hereby certified as the official plat and Commissioner's Order therefor for said T.H. 65 within the designated portion of said Section 17 pursuant to Minnesota Statutes 160.14 and 160.16

Commissioner's Order No. 66483 Location Plats 02-M9 to 02-M33

Recommended for Certification: Certified

Richard F. Braun
Commissioner of Transportation
Date 6-1-82
F.L. Marshall
Assistant Commissioner of Transportation
Date 6/3/82

I hereby certify that this plat was prepared by me or under my direct supervision and that I am a duly Registered Land Surveyor under the Laws of the State of Minnesota; that this plat meets requirements of Minnesota Statutes section 160.14 Subd. 2 and section 160.16.

Certified by John E. Jensen 10460 5-27-82
Registered Land Surveyor Reg. No. Date
Office of Surveying & Mapping

I hereby certify that this plat was surveyed by me or under my direct supervision and that I am a duly Registered Land Surveyor under the Laws of the State of Minnesota; that all measurements are correctly shown on this plat and that all monuments have been correctly placed as shown on this plat.

Certified by Samuel D. Jensen 12683 5-28-82
Registered Land Surveyor Reg. No. Date
MNDOT District Office

AZIMUTH ORIENTATION AND GRID CONVERSION

Plat azimuths are oriented to Minnesota State Plane Coordinate System with 0 degrees 0 minutes 0 seconds being "GRID NORTH"
Plat distances are ground lengths and can be converted to Minnesota State Plane Grid lengths by multiplying Plat distances by 0.9999928

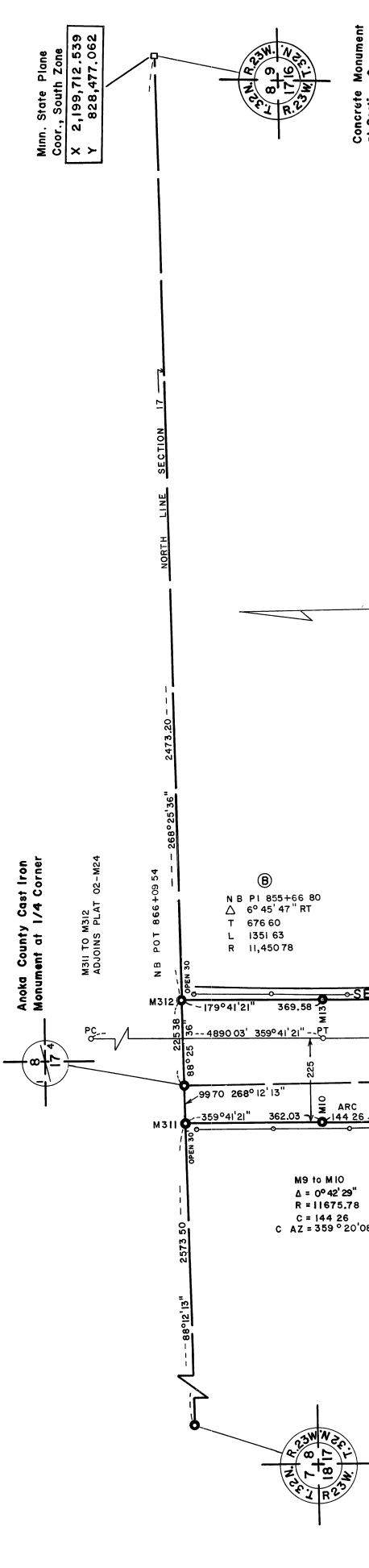
SURVEY STANDARDS

- The plat values, azimuths and distances, are based on the project control survey system.
- The boundary monuments shown on this plat have been field checked for location. The standard deviation for the monument positions is 0.1 ft
- The state plane coordinates shown on one monument are based on ties to national control monuments
- For details of this survey contact the Surveying and Mapping Section at the Minnesota Department of Transportation Golden Valley
Name of District

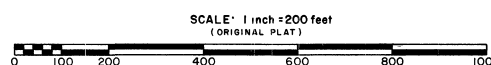
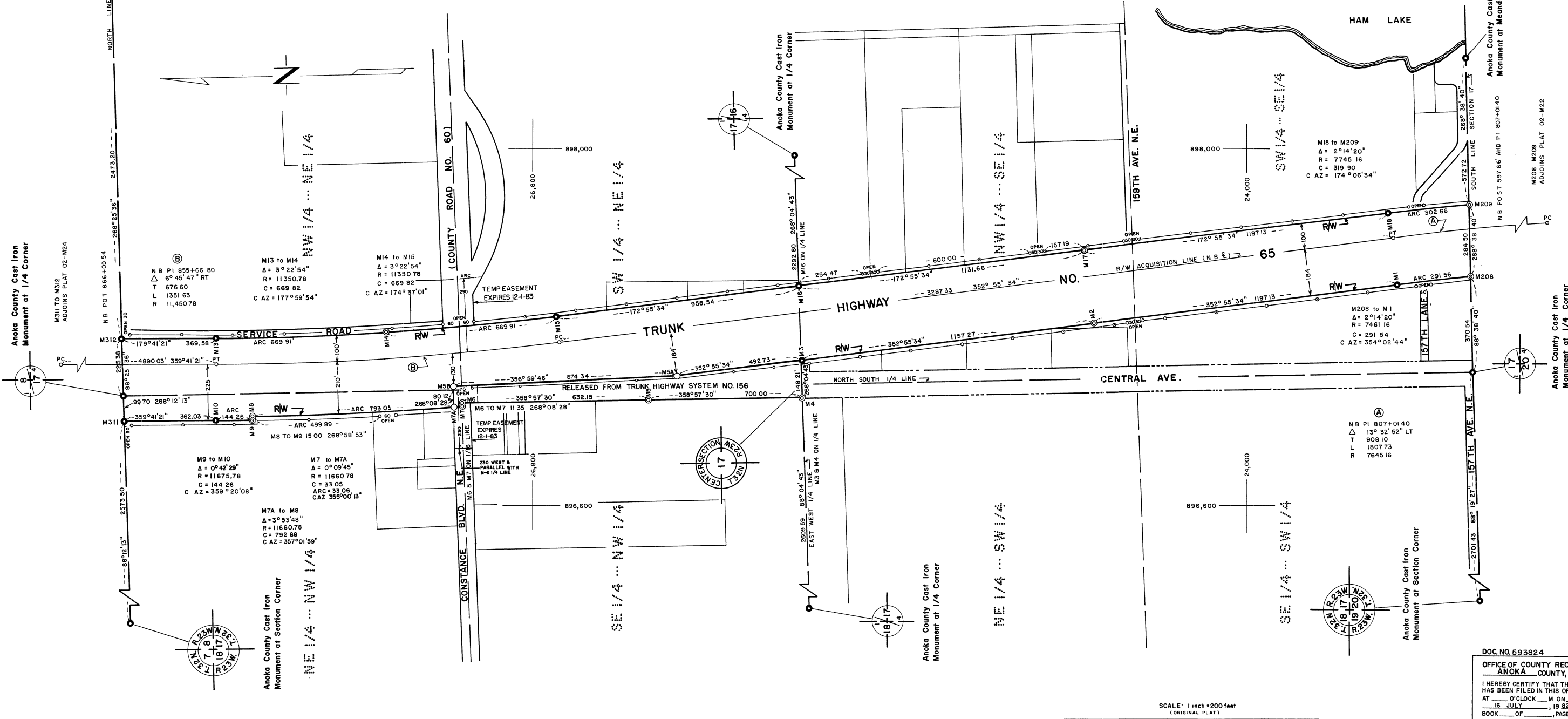
CONVENTIONAL SYMBOLS

Section Line	Access Control	Open
Quarter Line	Access Opening	Open
Sixteenth Line	Cast Iron Monument or 1/2" M.H.D. Iron Pipe with Aluminum Cap	Open
Property Line	3/4" M.H.D. Iron Pin	Open
R/W Boundary	Other Iron Monuments	Open
Other Road R/W's	Concrete or Stone Monument	Open
Railroad R/W	R/W Boundary Corner	Open
Private Easement		

DISTANCES SHOWN TO FEET (66, 80 ETC.) ARE EXACT EXTRINSIC VALUES



CITY OF HAM LAKE



PLAT NO. 02-M23
S.P. 0208-46 (T.H. 65)

DOC. NO. 593824
 OFFICE OF COUNTY RECORDER
 ANOKA COUNTY, MINN.
 I HEREBY CERTIFY THAT THIS PLAT HAS BEEN FILED IN THIS OFFICE AT _____ O'CLOCK _____ M ON _____ 16 JULY, 19 82 IN BOOK _____ OF _____ PAGE _____
 COUNTY RECORDER