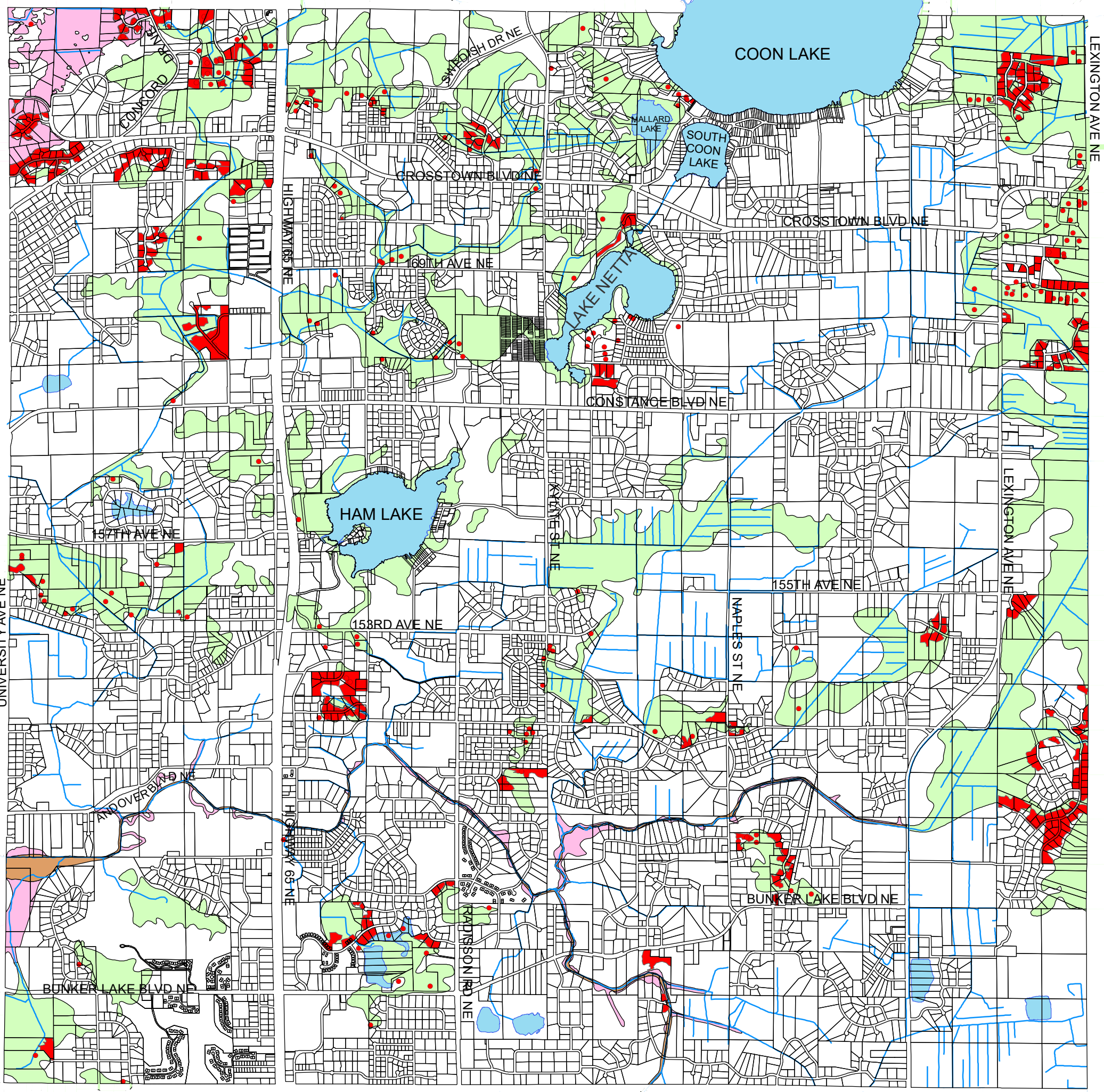


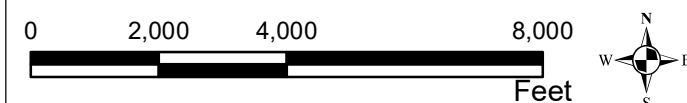
HAM LAKE, MINNESOTA

FLOOD ZONE MAP



Legend

- FEMA LOMA Structures Removed
- FEMA LOMA Areas Removed
- Ditches
- Lakes
- Zone A
- Zone A (Elevation)
- Zone A FLOODWAY



Map Date: 4/3/2024

ABBREVIATIONS:

FEMA - Federal Emergency Management Agency
 LOMA - Letter of Map Amendment
 Zone A - 1% probability of flood in any given year.
 (100 Year Flood)

FLOOD ZONE MAP:

Features portrayed on this map are a graphical representation, and should be viewed in this context.

Sources:

Anoka County Engineering & Surveying Departments
 Federal Emergency Management Agency
 (National Flood Insurance Program)

